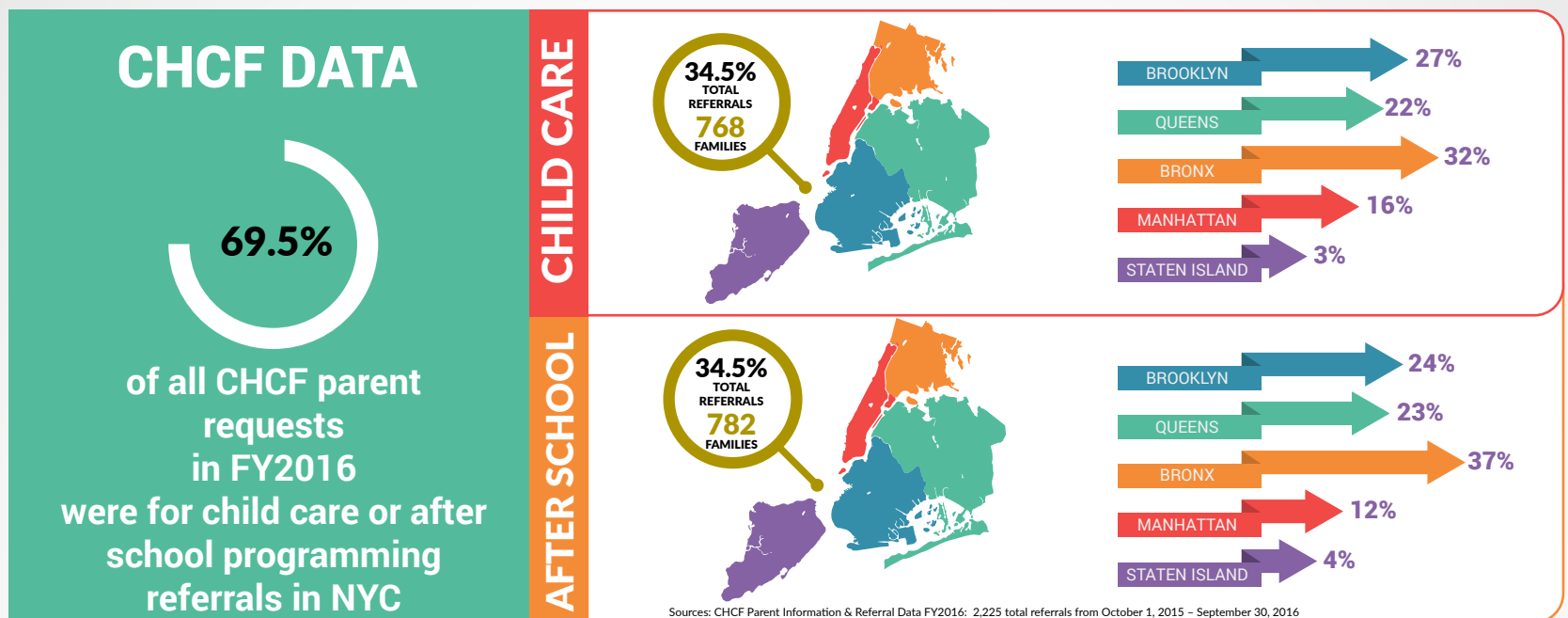




# Poverty & (In)accessibility in NYC: The Educational Services Gap for Latino families



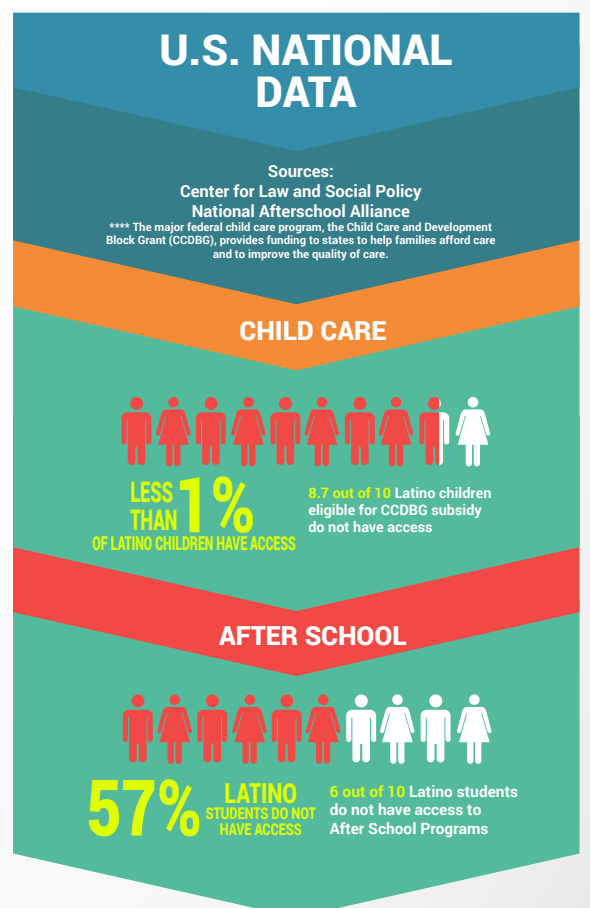
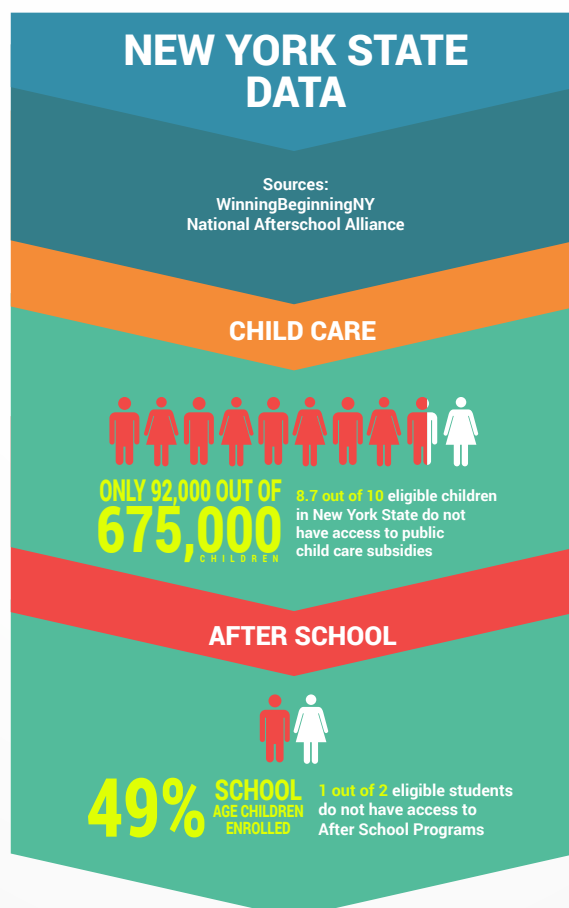
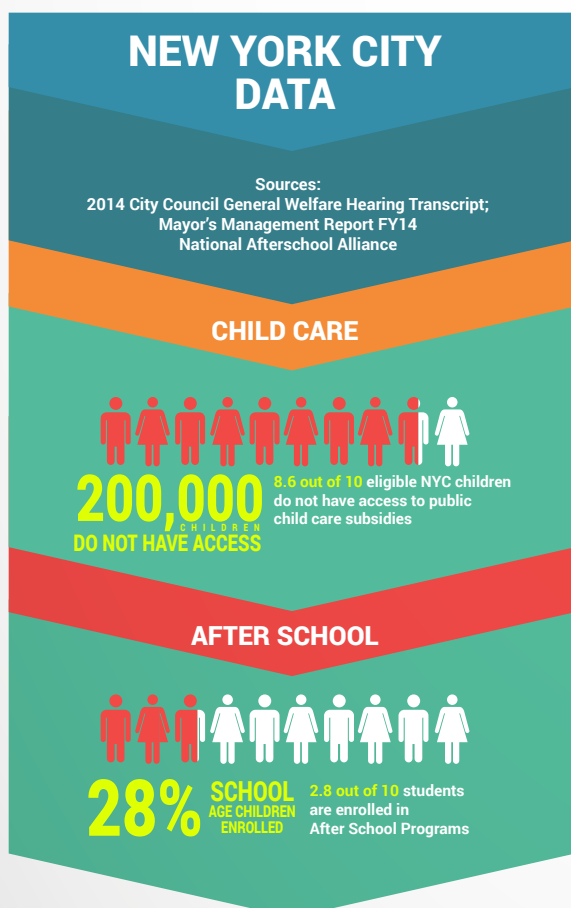
## Data2GO.NYC DATA shows that Latino families and children are **MORE LIKELY TO LIVE IN POVERTY**



Correlation does not equal causation, however correlations over 10% demonstrate a strong relationship between variables



\*\*Child Poverty is defined in Data2go.nyc as children under the age of 18 in households with income below the federal poverty line  
\*\*\*Disconnected youth- young people ages 16-24 who are neither working nor enrolled in school



## QUESTIONS FOR DISCUSSION

What other data is needed to assess the gap between existing accessible services for young children and the need for these types of services?

What are immediate action steps that mitigate the effect of poverty on access to educational services for Latino families and youth?

What are long term solutions?

Let's keep the discussion going. Share your thoughts at [www.chcfinc.org](http://www.chcfinc.org)